

Name:

Year:

1 Answer the following questions about human beings:

- Why are we able to think?
- What ability does being able to speak give us?
- At what stage of life is the body fully formed?
- At what stage of life do you learn to walk, to read and write?

2 Underline the words related to the musculoskeletal system:

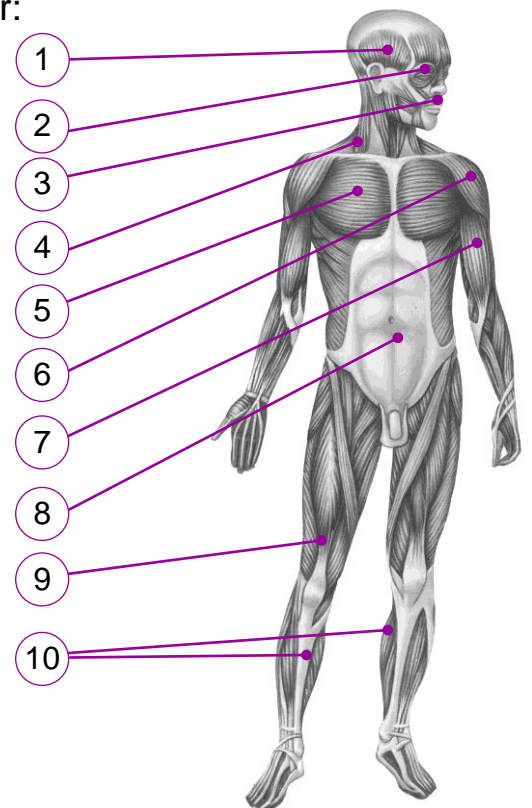
joints bones ears muscles stomach vertebral column

3 Relate the name of each name bone with the part of the body it is associated with:

radius	face	vertebra	femur
head		torso	
head		torso	
head		torso	
jaw	rib cage	scapula	humerus

4 Name the muscle corresponding to each number:

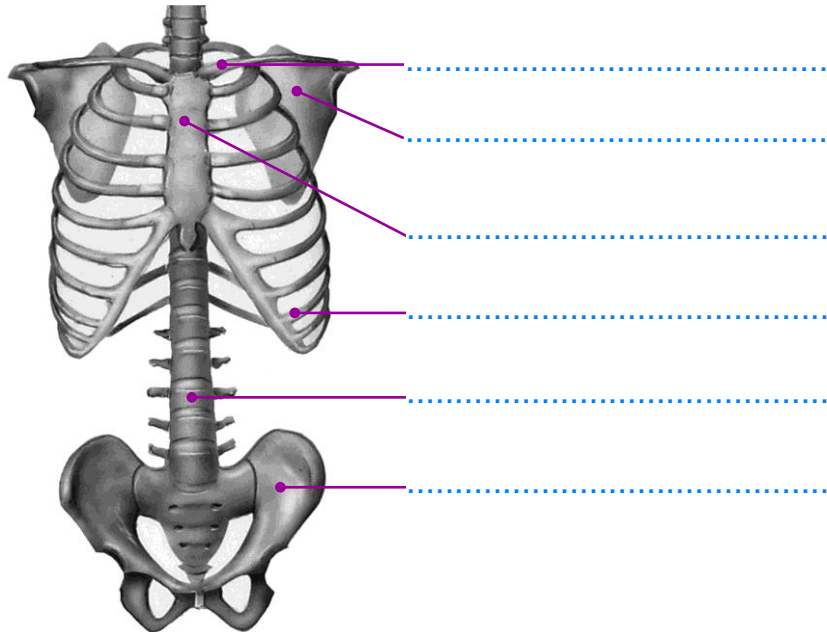
- 1
.....
- 2
.....
- 3
.....
- 4
.....
- 5
.....
- 6
.....
- 7
.....
- 8
.....
- 9
.....
- 10
.....



Name:

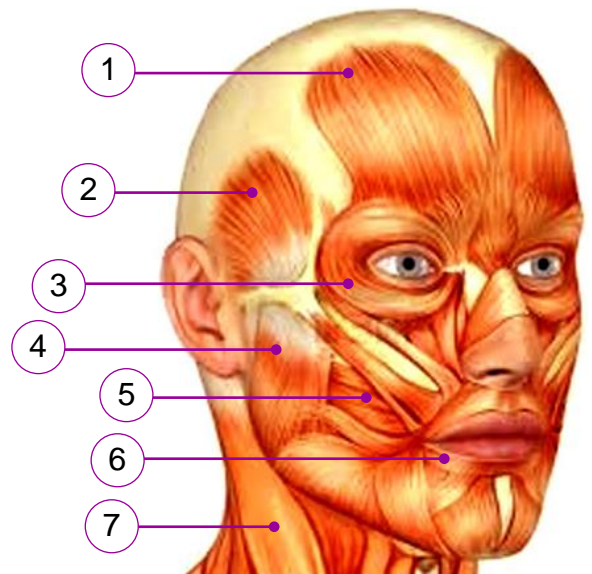
Year:

1 Write the name of the following bones:



2 Consult books or use the internet to identify the following muscles:

- 1:
- 2:
- 3:
- 4:
- 5:
- 6:
- 7:



3 Indicate whether the following statements are *true* (T) or *false* (F):

- The relaxation of the deltoid muscles lifts the arm.
- The contraction of the biceps causes the arm to bend.
- The contraction of the quadriceps causes the leg to bend.
- The contraction of the calf muscle causes the leg to bend.
- The relaxation of the masseter muscle separates the upper and lower jaws.
- The contraction of the orbicularis oculi muscle separates the eyelids.

Name: Year:

1 Indicate whether the following statements are *true* (T) or *false* (F):

- Foods which have a large fat content provide very little energy.
- Vitamins are found primarily in fruits and vegetables.
- Carbohydrates are found in bread, potatoes, rice, etc.
- Proteins come from meat, fish, eggs, milk and pulses.

2 Relate, by using arrows, a method of food preservation in the first column with its description in the second column:

Drying	Food preservation in salt.
Salting	Immersion of the food completely in oil.
Freezing	Removing the water from the food.
Preserving in oil	Food preservation at subzero temperatures.

3 From the food pyramid below, design your healthy balanced diet for a day:

Breakfast

.....

Lunch

.....

.....

Snack

Dinner

.....



Name: Year:

1 Indicate to which group each of the following foods belong:

- | | |
|-------------------|---------------|
| Lentils: | Rice: |
| Pasta: | Peach: |
| Beef steak: | Hake: |
| Yogurt: | Tomato: |
| Olive oil: | Peas: |

2 Indicate what type of nutrient is most important in each of the following foods:

- Bread:
- Eggs:
- Potatoes:
- Lettuce:
- Apple:

3 Indicate whether the following statements are true (T) or false (F):

- Breakfast is the least important of all of the meals of the day.
- In a healthy diet there are foods from all of the food groups.
- In a balanced diet there is only one food from one food group.
- There are some foods that we should eat more of than others.



4 Complete the following statements related to food:

- Butter is a fat that comes from
- is one method of preserving food by storing it in salt.
- Proteins are the characteristic that can be found in meat.
- The slight excess of fat in the body is called being
- The sausage can be found in the part of the food pyramid.

Name: Year:

1 Indicate whether the following statements are true (T) or false (F):

- Chronic diseases are those that have a beginning and an end.
- Antibiotics cure infectious diseases caused by bacteria.
- Drugs are substances that are produced diseases to cure.
- Vaccines are medicines that prevent non-communicable diseases.

2 Relate with arrows one element of the first column to a second column element:

Virus	Strengthens the muscles and the heart.
Sleep	So as not to be tired during the day.
Physical exercise	Produce contagious diseases.
Contagious disease	Is avoided if you cover your mouth when sneezing.

3 What are the places in your home where the most accidents can happen?:

- a)
- b)

4 Try to remember and think about the last illness you had. Answer the following questions:

- What was the disease called?
- Was it contagious or non-contagious?
- How were you cured?:
 - By resting.
 - Taking medicine.
 - Immobilizing a part of your body.

Name: Year:

1 Match each action in the first column with a habit in the second column:

Showering every day

Sleeping 10 hours a day

Eating very sweet foods

Watching TV for 3 hours a day

Cleaning under the nails well

Healthy habit

Unhealthy habit

2 Indicate how you have to carry out the following actions in order to prevent accidents:

- Showering:
- Cycling:
- Climbing the stairs:
- Drinking water in the kitchen:
- Picking up objects that you cannot reach:

3 Indicate whether the following statements are true (T) or false (F):

- If you have a fever you should drink little water.
- If you sneeze, cover your mouth with your hand.
- If you are given a medicine, you must take the dose.
- An itchy head is a symptom of having head lice.



4 Complete the following sentences related to diseases:

- Myopia is a type of disease.
- Viruses and bacteria cause diseases which are.....
- Considering the duration of diabetes, it is a disease.
- If we are sick, we notice some signs which are called

Name: Year:

1 Answer these questions about the life processes of animals:

- What are the three life processes of animals?
-
- What type of animal is the hippo due to its feeding?
- Why?
- The bear is omnivorous. What kind of food does it eat?
-

2 Write the name of an animal with the following characteristics:

- It lays eggs out of the water
- It is viviparous and moves on four legs

3 Match each stage of the cycle of the ladybird with a phrase:

Adult

It leaves the pupa

Larva

Exits the adult's body

Egg

Animal that leaves the egg

Pupa

Inside the larva turns into an adult

4 Explain two basic things necessary to look after a pet:

- a)
- b)

5 Match with arrows each living thing with its kingdom:

Palm tree

Ant

Animal kingdom

Stork

Flounder

Plant kingdom

Carrot

Name:

Year:

1 Read the following text and answer the questions:

The lionesses smell a zebra; they approach it silently, run towards it and kill it. After eating a part, they also let the cubs eat some as well.

- What actions in the text are related to the role of nutrition?
- What actions in the text are related to the role interaction?
- What actions in the text are related to the role of reproduction?

2 Match with arrows each living thing with its kingdom:

- | | |
|----------|-------------------|
| Corn | Animal kingdom |
| Whale | Plant kingdom |
| Bacteria | Fungi kingdom |
| Protozoa | Moneran kingdom |
| Mushroom | Protocist kingdom |



3 Choose classification criteria and make two groups with the following animals: cat, chicken, frog and mouse.

- Classification criteria:
- First group:
- Second group:

4 Explain the life cycle of a mosquito using the following keywords: adult, egg, larva, pupa:

.....

.....

.....

.....

Name: Year:

1 Match the following vertebrates with their characteristics:



Birds

Body covered with hair and are viviparous

Fish

They breathe with lungs and through the skin



Amphibians

Body covered with feathers and breathe with lungs

Reptiles

Body covered with scales and breathe with lungs



Mammals

They breathe through gills and have body covered with scales

2 Complete the following sentences:

- The body of the is protected completely by a shell.
- Arthropods that have six legs on their body are all called
- Spiders have legs. (number).
- An example of a marine arthropod is

3 Write the name of an animal of each type of livestock:

Ovine: Bovine:

Porcine: Poultry:

4 Indicate whether the following statements are true (T) or false (F):

- The cow is an omnivorous animal.
- Bees are oviparous animals.
- On farms, livestock can be fed with feeds and fodder.
- Chickens that are able to lay eggs can be male or female.

Name:

Year:

1 Read the following text and answer the questions:

Squirrels are animals with their bodies covered with hair who live in almost all of the forests. They eat nuts, like pine nuts, and the females nurse their young offspring.

- To which group of animals do squirrels belong?
- Give two characteristics of this group that is mentioned in the text:
-
-
- What type of animals are squirrels if you look at their food?
-

2 Match each animal in the first column with a group in the second column:

Mussel	Insects
Centipede	Annelids
Shrimp	Molluscs
Beetle	Myriapods
Leech	Crustaceans



3 Frogs are found in places where water is abundant. Give two reasons why frogs need to live near water:

-
-

4 Indicate whether the following statements are true (T) or false (F):

- Worker bees are the ones responsible for laying eggs.
- Bees are able to inject venom when its bite you as a defence mechanism.
- Worker bees collect nectar and pollen from flowers.
- The drones are responsible for building the hive and defending it.

Name:

Year:

1 Match each change of state with one sentence:

Melting

Change from solid to liquid

Solidification

Change from liquid to solid

Evaporation

Change from liquid to gas

Condensation

Change from gas to liquid

**2** Indicate if the following materials are natural or artificial:

– Salt:

– Paper:

– Wool:

– Glass:

– Silk:

– Wood:

– Plastic:

– Diamond:

3 Complete the following sentences about forms of energy:

..... energy is found in oil and other fuels.

..... energy is used to run a washing machine.

4 Explain two activities that you can do in order to save energy at home:

a)

b)

5 Indicate whether the following statements are true (T) or false (F): Glass is fragile. Iron is a thermal insulator. Steel is a thermal conductor. Elasticity is a type of texture of materials.

Name: Year:

1 Name the change of state that occurs in each of the situations:

- Puddles dry up with the heat of the Sun:
- Water vapor forms droplets on a cold glass:
- The butter will change to a liquid with increasing temperature:
- Water freezes if the temperature drops below zero degrees:

2 Match with arrows the properties with the states of matter:

Change of shape	Solid	Change in volume
	Liquid	
No change in shape	Gas	No change in volume

3 Indicate the natural material used for manufacturing each of these artificial materials:

- Paper:
- Fabric:
- Glass:
- Plastic:



4 Indicate what energy conversion these devices perform:

- A lamp:
- An iron:
- A fan:
- A petrol car:

5 Indicate whether the following statements are true (T) or false (F):

- A wind farm uses energy from the sun.
- Natural gas is extracted from the air that is in the atmosphere.
- A hydroelectric plant uses the energy from moving water.
- Coal is a black rock that is found in the Earth's subsurface.

Name: Year:

1 Indicate whether the following statements are true (T) or false (F):

- The lever and the inclined plane are simple machines.
- Pliers and gears are good examples of compound machines.
- The bicycle is an example of a simple machine with wheels.
- Machines do work without us having to expend energy.

2 Complete this table with the name of inventions:

Inventor	Nombre del invento
Johannes Gutenberg	
James Watt	

3 Match each invention of the first column with a phrase:

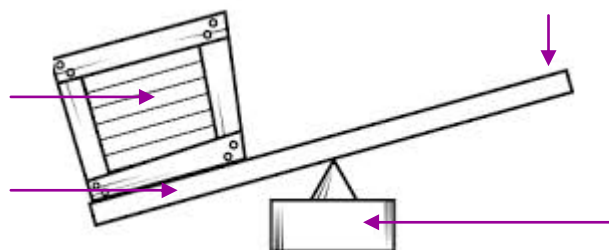
Telephone	Machine that makes copies of books
Printer	Transmits sound as electrical signals
Telegraph	Converts chemical energy into mechanical energy
Steam engine	Device that sends text messages between post offices

4 Indicate what form of energy these machines use:

- a) A vacuum cleaner:
- b) A wood stove:



5 This drawing shows a lever. Indicate the bar, the fulcrum, the weight and the force:



Name: Year:

1 We are going to move a rock with a lever. We have two levers, one of two metres and another of four metres. Answer:

- Which is the best lever for moving the rock?:
- Why?
-

2 Match using arrows, each machine with an application:

Wheel	To transmit motion
Pulley	To transport people
Lever	To lift weights
Gear	To move weights
Inclined plane	To ease slopes

3 The telegraph and telephone are two systems of distance communication.

- What type of signals is sent by these two inventions?
- What kind of information is sent by the telephone?
- What kind of information is sent by the telegraph?

4 Name a machine that works with the following energies:

Chemical energy: Wind energy:

Electrical energy: Mechanical energy:

5 Indicate whether the following statements are true (T) or false (F):

- The brake of the bicycle is a gear.
- Pliers are a machine that is composed of two gears.
- The handlebars of a bicycle are a lever that controls the direction.
- The pedal movement of the bicycle is directly transmitted to the rear wheel.